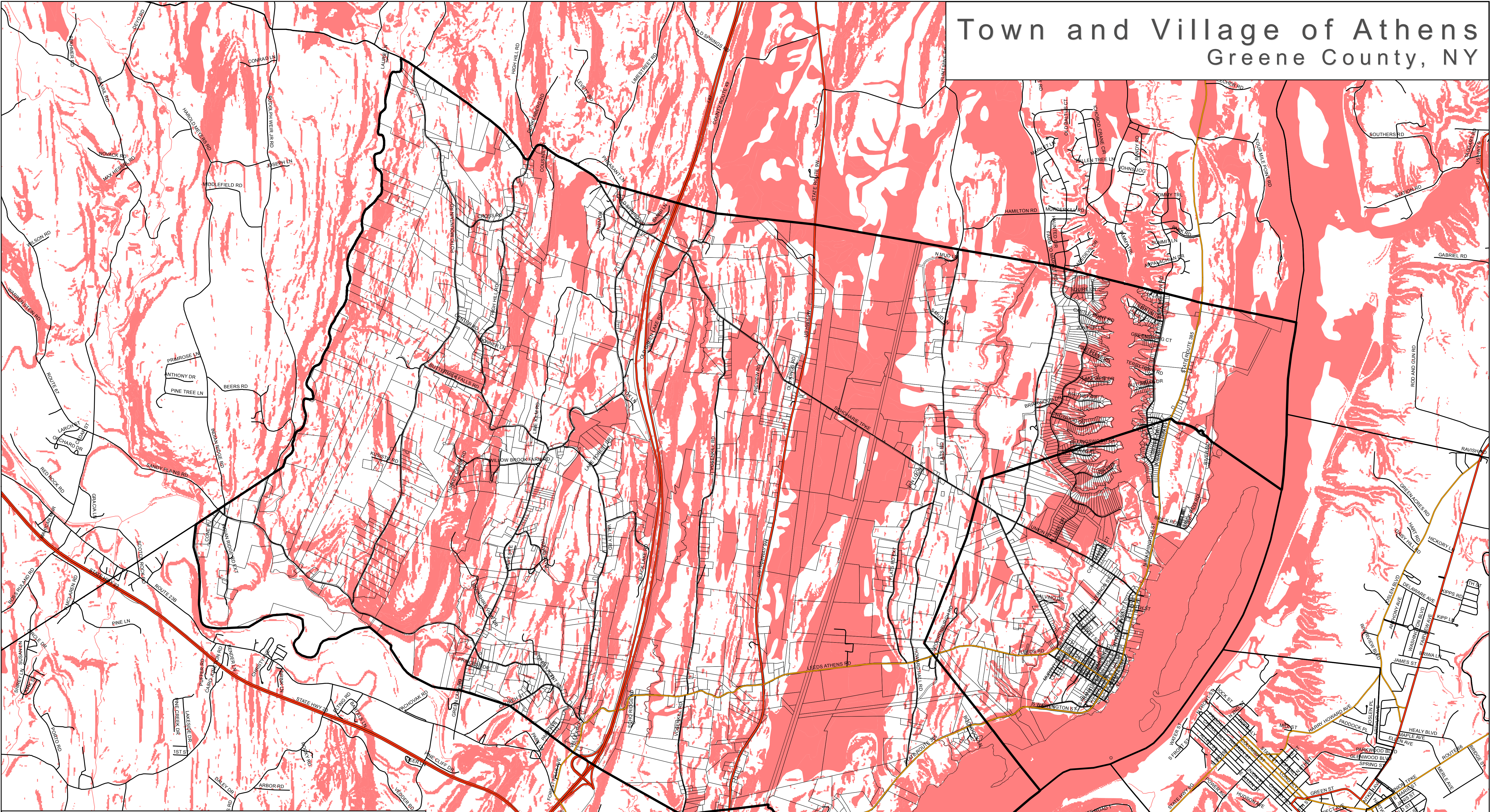

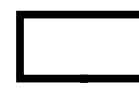
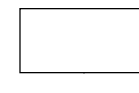



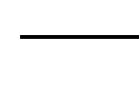



# Town and Village of Athens Greene County, NY



### All Environmental Constraints (Water Constraints, and Steep Slopes)

-  Town Boundary
-  Village Boundary
-  Property Boundaries
-  All Environmental Constraints Merged
- Roads**
-  Primary Highway
-  Secondary Road-State or County
-  Local Road
-  Ramp



**Laberge**  
ENGINEERING  
ARCHITECTURE



**Group**  
SURVEYING  
PLANNING

4 Computer Drive West • Albany, New York 12205  
www.labergegroup.com



**Community Planning &  
Environmental Associates**

Nan Stolzenburg, AICP - [www.planningbetterplaces.com](http://www.planningbetterplaces.com)  
152 Stolzenburg Road, Berne, NY 12023  
Don Meltz, Planning and GIS - [www.donmeltz.com](http://www.donmeltz.com)